

TESTIMONIAL:
GAVIN CLARK
AP ENTERPRISES

“WE LOVE THIS PLOW.”
It gives you the surface clearance of a sectional but with the simplicity and ease of use of a rubber edged snow pusher.”

PRODUCT SPECIFICATIONS

LOADER MODEL:				
MODEL NUMBER	PUSHER WIDTH	PUSHER WEIGHT	MACHINE HP	SNOW CAPACITY
SG12L	12'-6"	2495lbs	100+	15 yd
SG14L	14'-6"	2735lbs	120+	18 yd
SG16L	16'-6"	2975lbs	125+	21 yd

COMPACT WHEEL LOADER, BACKHOE, AND SKIDSTEER MODEL:				
MODEL NUMBER	PUSHER WIDTH	PUSHER WEIGHT	MACHINE HP	SNOW CAPACITY
SG08M	8'- 4"	1049lbs	50+	8 yd
SG10M	10'- 4"	1375lbs	60+	10 yd
SG12M	12'- 4"	1495lbs	70+	12 yd

 **GET YOUR CUSTOM QUOTE TODAY!**
visit fusionsnoplusher.com for more details



NEW FROM PRO-TECH
THE FUSION EDGE SNO PUSHER

A Revolutionary Cutting Edge, Coupler, And Shoe Design That Is The First Of Its Kind

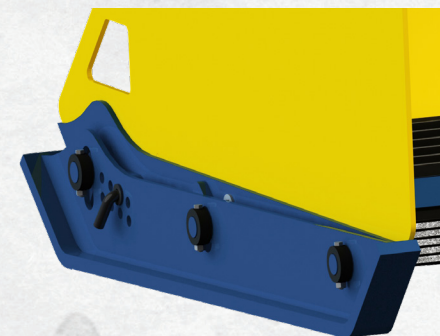
A FUSION OF INCREDIBLE SURFACE OUTCOME, EASE OF USE, AND UNPARALLELED DURABILITY.

As a snow plow professional your communities rely on you to be there when Mother Nature is at her worst. You require equipment that works and gets the job done. But at times, you require a little more. Some jobs demand not only quality products that work but ones that excel...that take it to the next level. That's why Pro-Tech brings to you the Fusion Edge Sno Pusher, a snow plow that scrapes better, lasts "forever", and can be easily operated by a seasoned snow veteran or someone in their first season. Next winter, don't just take-on snow storms. Conquer them.



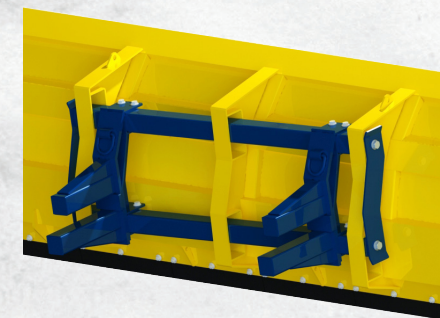
FUSION EDGE

- **Best of Both Worlds:** High-end, abrasion-resistant-steel is fused directly into the rubber edge allowing you to squeegee wet heavy snow and scrape hard-pack
- **Flip It:** The Fusion Edge features a double edge, meaning that you can easily flip it when one side is worn and keep pushing snow
- **Quick Change:** 24" cutting edge sections allow you to easily swap out pieces if one is damaged
- **Extreme Durability:** In testing, the Fusion Edge averaged 500+ hours of use before needing to be replaced



FAST ATTACK SHOES

- **Adjust In Seconds:** Cutting edge depth is no longer made along the entire edge of the Sno Pusher, simply pull the pin on the Fast Attack Shoe and place in the optimal position
- **Perfect Position:** Quickly make adjustments as the cutting edge wears to find the perfect attack position
- **Longest Wear Life:** The shoes are designed to self-level, giving you a perfect pushing position and are made of impact and abrasion resistant steel that is through-hardened
- **Swap Shoes:** Many times when you need to swap a shoe, every second counts. With the Fast Attack Shoe the three attachment collars allow you to quickly remove and replace the shoe when needed



PRO FLOAT COUPLER

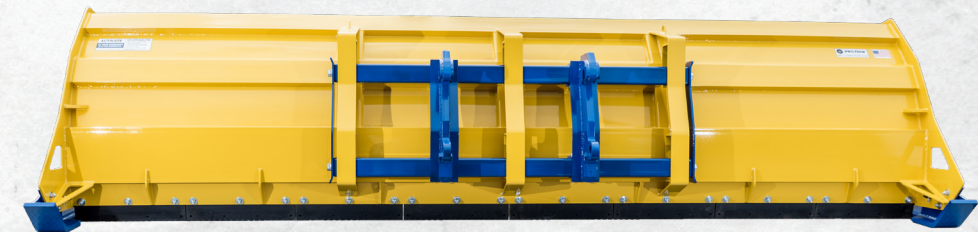
- **Full Movement:** Coupler oscillates, contouring to surface variations
- **Multiple Options:** Bolt-on coupler allows for multiple connection types as prime movers change. Options are compatible with CAT IT, CAT Fusion, JRB, Volvo, Universal Quick Attach, and Pro-Tech's own post-style mount
- **No Limits:** Built the "Pro-Tech way" the Pro-Float coupler has no restrictions when stacking or pushing snow
- **Easy Maintenance:** The Pro Float Coupler is designed with minimal parts making any required maintenance quick

PRODUCT HIGHLIGHTS

BACKED BY A
10 YEAR
WARRANTY



- 24" cutting edge sections
- Designed to clear all types of snow including hard-pack
- "Razored" edges allow edges to flex and contour to surface
- Fixed cutting edge allows for depth adjustment to be made with Fast Attack Shoes



- Self leveling shoes help the plow maintain a level position
- Abrasion and impact resistant shoes are through hardened providing maximum wear life
- Adjustment holes allow for easy setting of cutting edge depth
- Bolt-on coupler (Allows for multiple connection types)
- Coupler design can oscillate and move vertically and horizontally
- Reinforced structural steel chassis provides for maximum durability

TOP 3 REASONS TO USE A FUSION EDGE SNO PUSHER:

SURFACE OUTCOME

Looking to save time and decrease salt usage?
The Fusion Edge Sno Pusher can do both.

EASE OF USE

From the snow plowing veteran to the newbie,
the Fusion Edge Sno Pusher is easy
to use and maintain.

DURABILITY

Ever have equipment fail during a winter storm?
The Fusion Edge Sno Pusher is built tough
so you can rely on it through winter's worst.



GET YOUR CUSTOM QUOTE TODAY!
visit fusionsnopusher.com for more details