



---

# **Pro-Tech Turf Pusher™**

## **Owner's Guide**

---



SPT Model

## WARNING:

Do not get under the unit. Take precautions to properly secure unit. Do not rely solely upon the hydraulics of your machine.

## OPERATING THE UNIT

The Pro-Tech Turf Pusher™ is designed with features to provide safe and efficient snow removal from the turf field.

To ensure your unit will provide you with years of service with minimal maintenance follow these simple instructions:

1. Once the Turf Pusher is properly attached to your machine the pipe glide system **MUST** be inspected to ensure that it is free from any sharp edges or debris prior to each use.
2. To level the unit set it down and adjust the curl of your bucket, making sure that the top of the side plates are parallel to the plowing surface. Then lift the Turf Pusher 1/8" to 1/4" off the ground
3. **DO NOT** apply down force to the unit while plowing. This will considerably shorten the life of the Turf Pusher and could possibly damage the turf surface. Down pressure is **NOT** necessary for proper plowing.
4. After plowing, the Turf Pusher must be placed on a clean non-abrasive surface to avoid damaging the pipe glide system.

## ATTACHING THE UNIT:

### OEM Quick Coupler

If your Pro-Tech Turf Pusher™ (SPT) is equipped with the manufacturer's OEM Quick Coupler. Figure 1

1. Attach the prime mover specific coupler to the Turf Pusher chassis with the supplied pins.
2. Remove the bucket from your machine.
3. Drive machine into the adapter located on the back of the Turf Pusher.
4. Engage the locking pins.

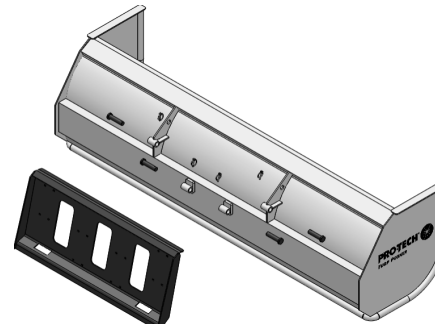


Figure 1

### Hooks and Pins

If your Pro-Tech Turf Pusher™ (SPT) is equipped with hooks and pins for a John Deere bucket connection. Figure 2

1. Remove the bucket from your tractor.
2. Drive machine into the adapter located on the back of the Turf Pusher.
3. Clip the lower pins in place with standard cotter pins.

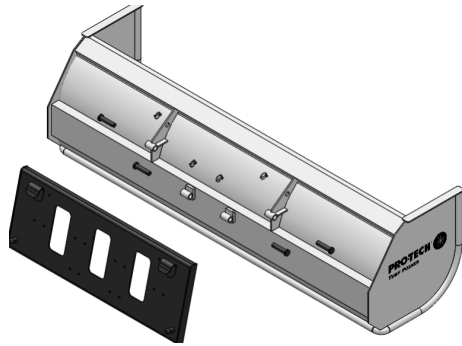


Figure 2

## OPERATING TIPS

1. Remove the snow as early as possible to avoid hard packed conditions.
2. Remove snow by driving machine across the field perpendicular to the length of the field. Figure 3

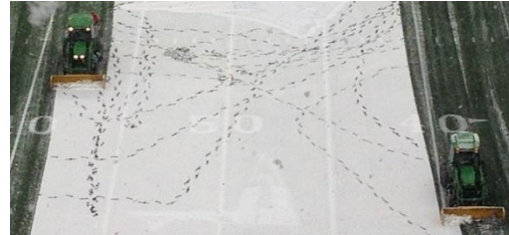


Figure 3

3. If snow is deep, take smaller cuts on each pass to minimize spillage.
4. Do not try to scrape any ice or hard packed snow from the field. This may cause damage to the turf.

## MAINTENANCE & STORAGE

Your Pro-Tech Turf Pusher™ requires minimal service to remain in top condition. Follow these simple guidelines to ensure proper plowing and long life:

The storage of the turf pusher is crucial to keeping the unit in proper operating condition for many years.

Properly clean the unit before storage and remove dirt, debris, salt, etc. to extend paint life.

Check the contact edge of the pipe glide system to make sure it is free from any sharp edges or debris. Paint any exposed steel surfaces to keep the unit free from corrosion.

NEVER allow the Turf Pusher to be placed on stone, gravel, or any other abrasive surface. Only store the Turf Pusher on a clean non-abrasive surface to avoid damaging the pipe glide system.

Failure to follow any of these guidelines may result in damage to turf or any other plowed surface this unit was designed for.

## LIMITED 3 YEAR WARRANTY

Pro-Tech will repair or replace any Turf Pusher proven to be defective in materials or workmanship for three years after the purchase date, in accordance with the following terms and conditions:

1. Pro-Tech reserves the right to determine whether a unit will be repaired or replaced.
2. Transfer of ownership to any party other than those mentioned on the original, returned warranty card or online registration will completely void this warranty.
3. All shipping and handling charges for returned units must be prepaid by the owner and received at the Pro-Tech facility FOB.
4. Shipping and handling charges may be avoided by submitting photographic evidence clearly showing the problem area and/or details of mechanical failure. (Note: We reserve the right to have a factory representative evaluate any problem(s) in the field.)

Pro-Tech makes no other warranty of any kind, either expressed or implied, including warranties pertaining to merchantability and fitness for a particular purpose.

This warranty is intended to provide you with specific rights; you may also have other rights which vary both internationally and domestically, as well as from state to state.

### Warranty Coverage Procedure

1. Call Pro-Tech directly to discuss product information:
  - Serial #, Purchase Date, Proof of Purchase, Product Registration; product registered with Pro-Tech
2. Describe the nature of the warranty claim.

3. Provide digital photographs illustrating the failure.
4. Pro-Tech will determine if failure falls within the 3 year warranty. If it does, Pro-Tech will offer corrective options. If it does not, Pro-Tech will offer repair and cost options.

### **Exceptions to Warranty**

1. Any damage occurring as a result of misuse, negligence, accidental impact. Turf Pusher is not warranted for use or storage on asphalt, gravel, or dirt surfaces
2. Any additionally purchased quick coupler will have a limited (1) one-year warranty
3. Any non-factory repair or alteration deemed detrimental to the functionality of the Turf Pusher upon inspection by a Pro-Tech engineer will void all warranties specific or implied.
4. Pro-Tech will not be held liable for any personal damage that occurs as a result of use. This includes, but is not limited to: Injury, death, loss of use, income or profit loss, property loss/damage.

### **PRODUCT REGISTRATION**

In order for your new Turf Pusher to be covered under warranty you must register it with Pro-Tech. To register:

1. Please visit [www.snopusher.com](http://www.snopusher.com) to register your unit online.



EST. 1993

SPT  
Owner's Guide